

dictées mélodiques
mise à niveau
département de musique

Francine Dufour
Johanne Hébert
Christiane Tardif



dictées mélodiques

mise à niveau

Le cahier de dictées mélodiques inclut la **copie de l'élève**, servant à noter les dictées, et le **corrigé**. Il a été conçu à partir du cours *Solfège et dictée* offert au Département de musique du Cégep de Sainte-Foy.

Sur la **copie de l'élève**, les indications suivantes sont données pour chacune des mélodies : le numéro de la dictée (correspondant au numéro de la page), les chiffres indicateurs et la note de départ. Les dictées sont regroupées par tonalité.

Pour ce qui est du disque, chaque mélodie est précédée de l'arpège et de la pulsation. La mélodie est d'abord jouée en entier ; on entend ensuite un premier fragment de deux mesures et une note, suivi d'un deuxième fragment composé des deux dernières mesures.

Bon succès!

Francine Dufour, Johanne Hébert et Christiane Tardif
Professeures de *Solfège et dictée*
au Département de musique du Cégep de Sainte-Foy

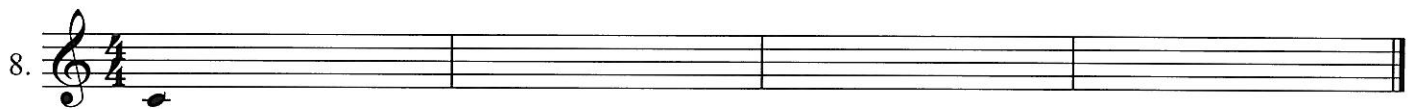
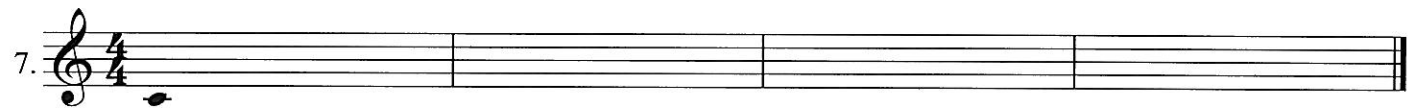
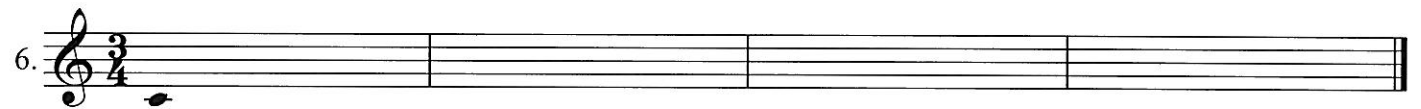
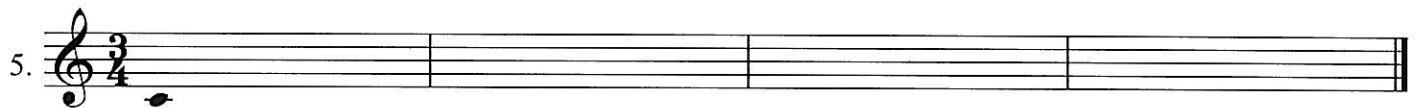
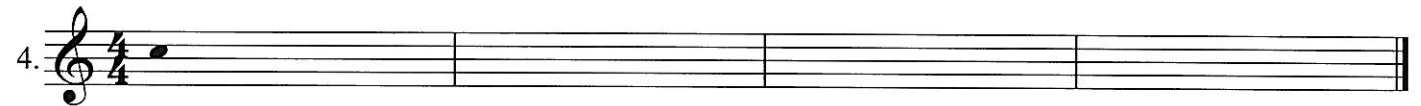
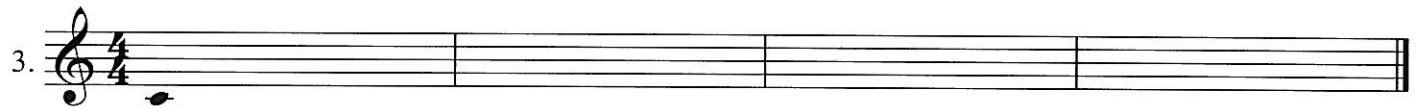
Des remerciements spéciaux sont adressés à ;

- M^{me} Adrienne Richard, coordonnatrice
au Département de musique du Cégep de Sainte-Foy;
- M. André Mathieu, adjoint au directeur des études;
- M^{me} Catherine Mercille, finissante en graphisme,
ayant conçu la page couverture;
- M^{mes} Carole Leclerc et Chantal Daoust,
graphistes au Cégep de Sainte-Foy;
- M. Jean-Guy Fallu, technicien en audiovisuel,
ayant réalisé l'enregistrement des dictées.

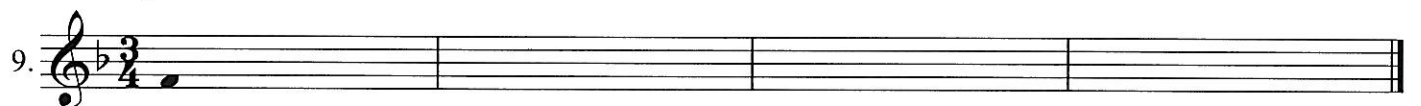
dictées mélodiques

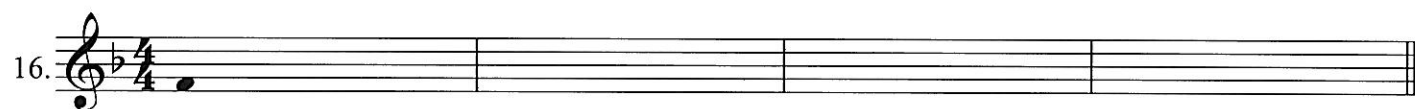
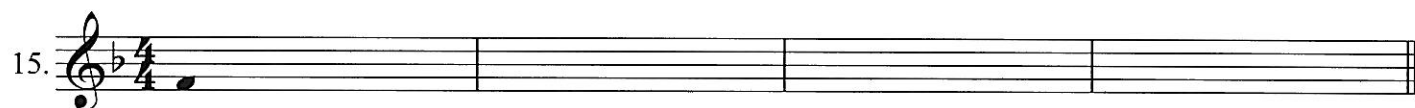
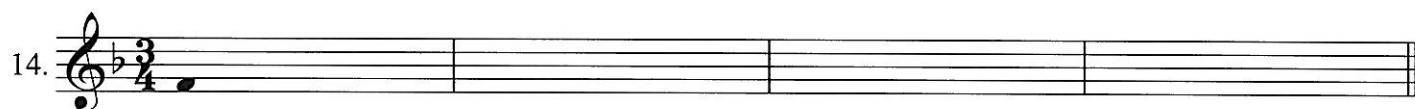
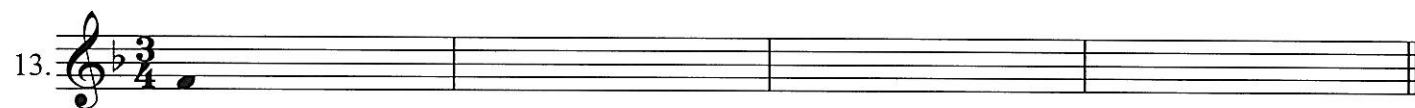
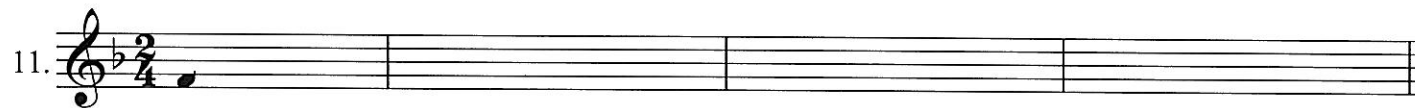
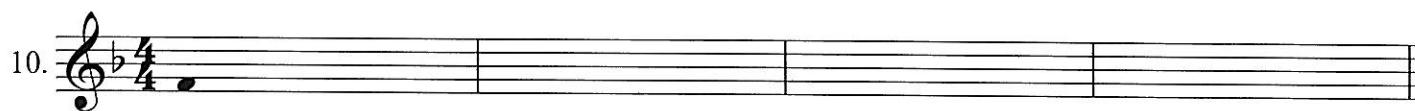
copie de l'élève

Do majeur

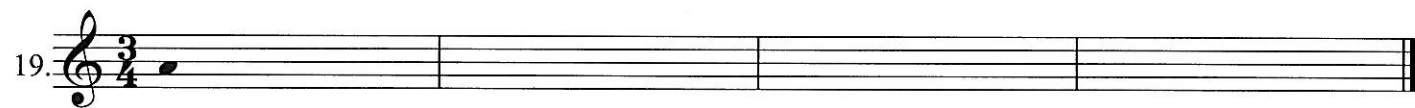
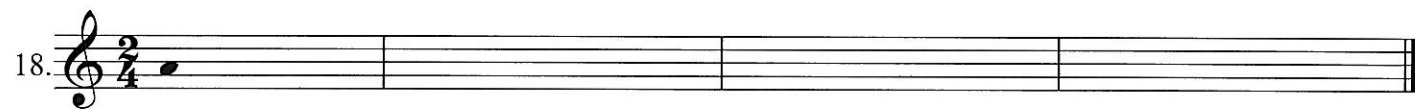
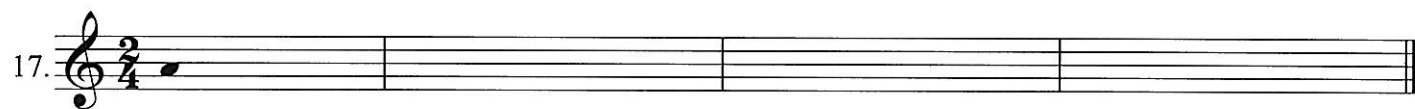


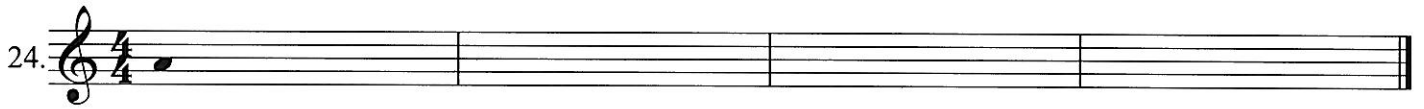
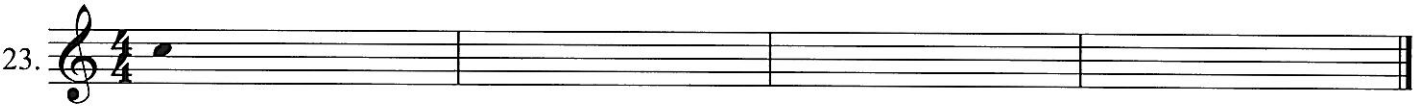
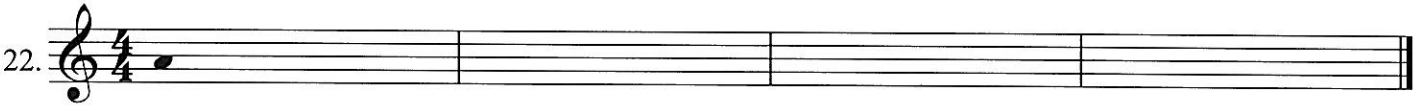
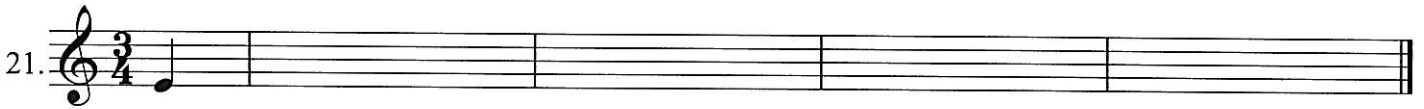
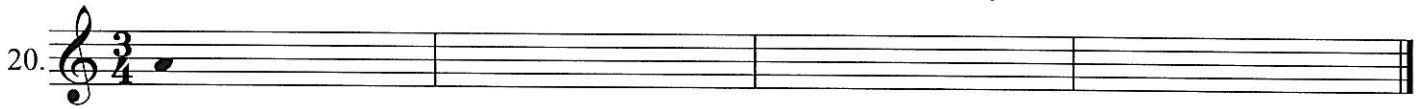
Fa majeur



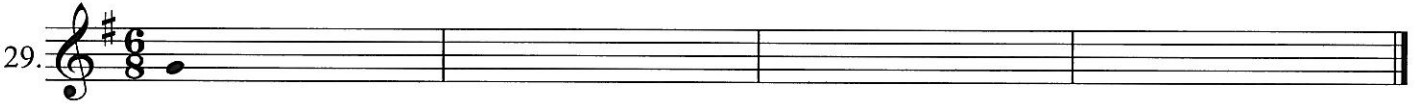
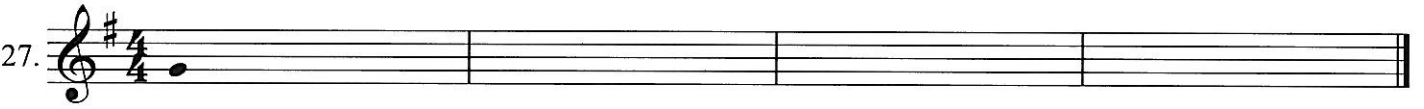
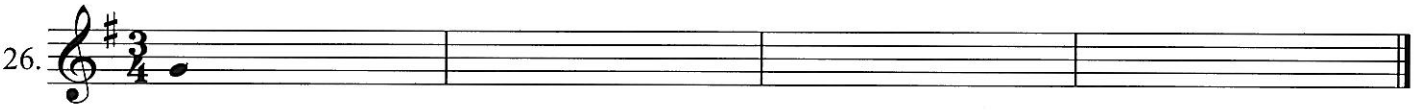
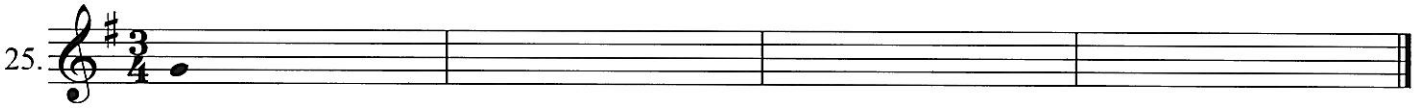


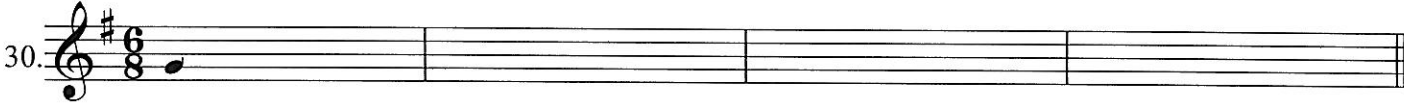
La mineur





Sol majeur

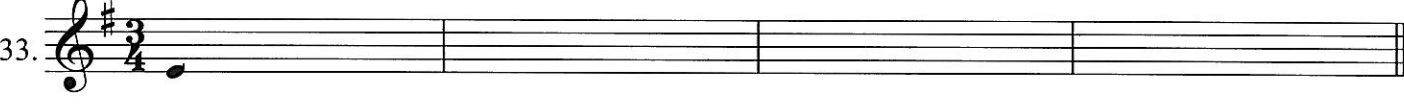


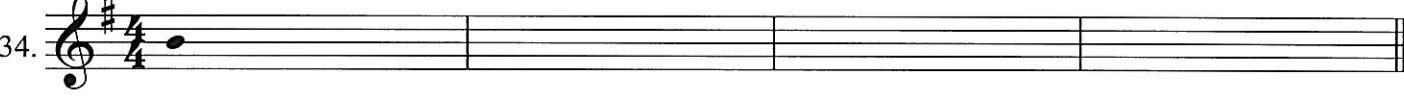
30. 

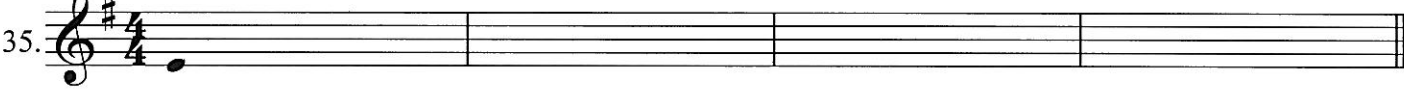
31. 

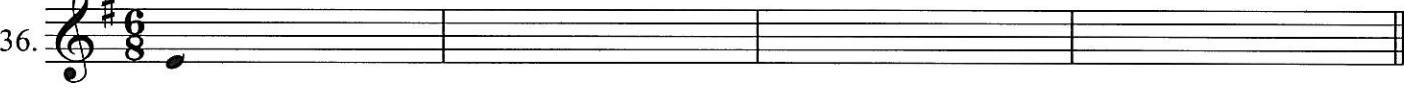
32. 

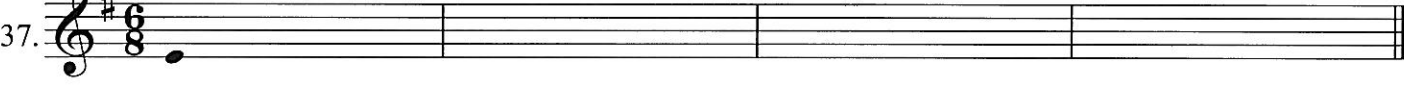
Mi mineur

33. 

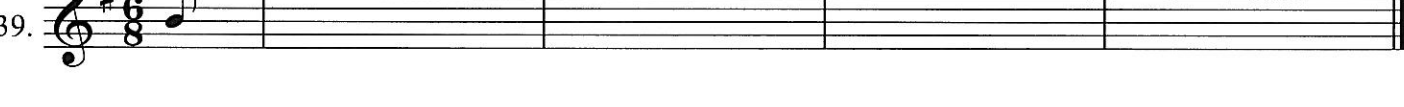
34. 

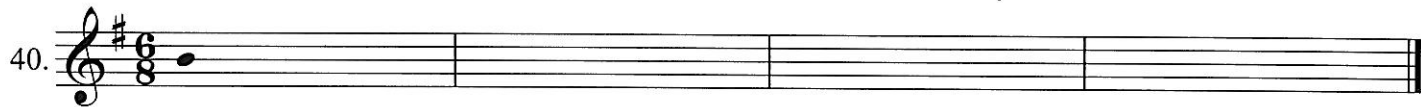
35. 

36. 

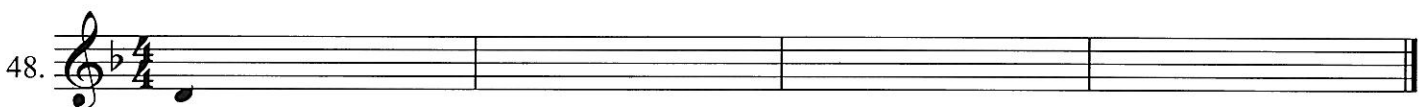
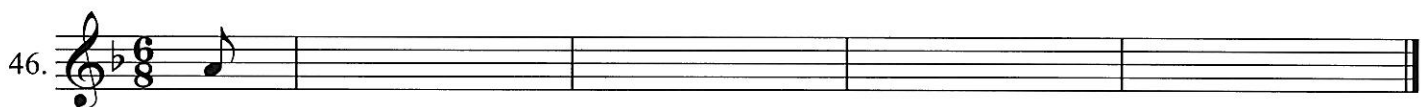
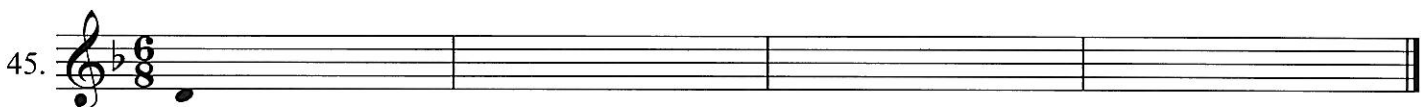
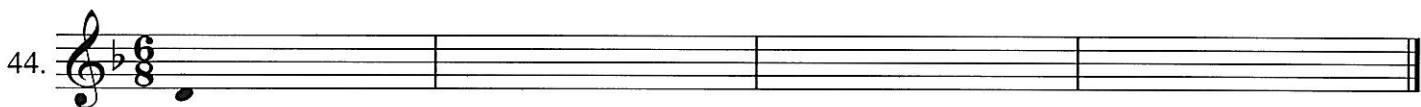
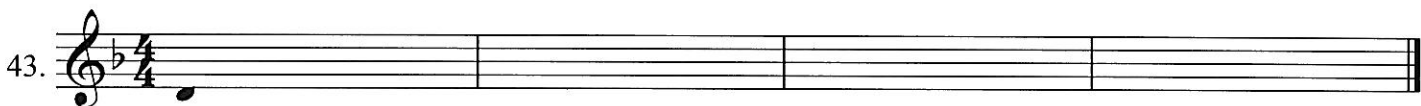
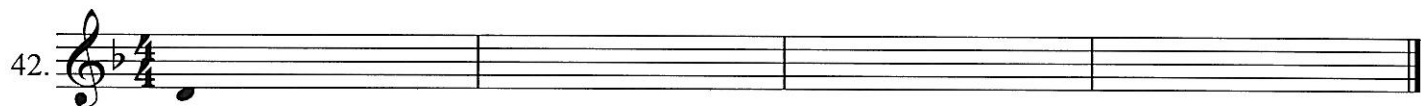
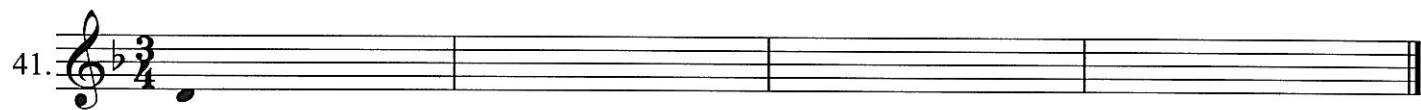
37. 

38. 

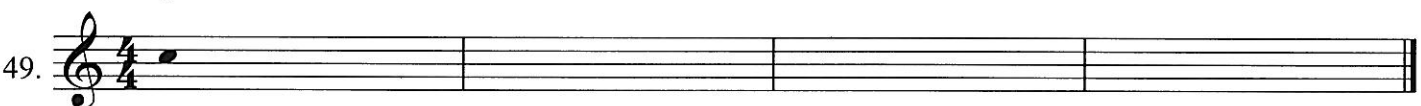
39. 

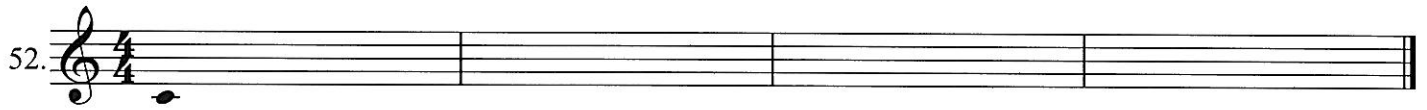
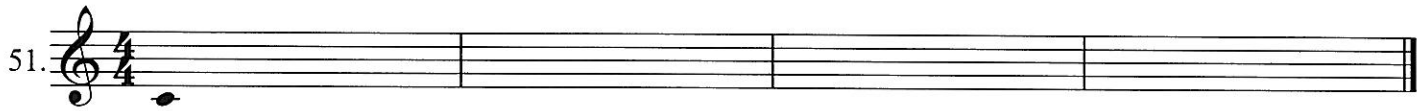
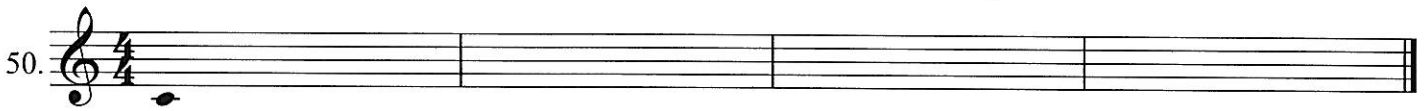


Ré mineur

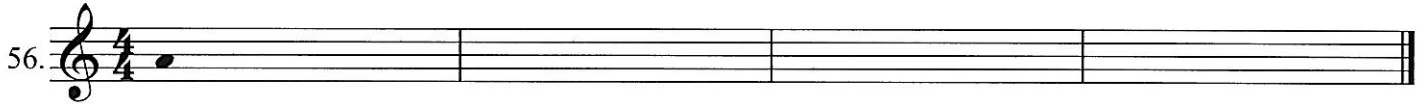
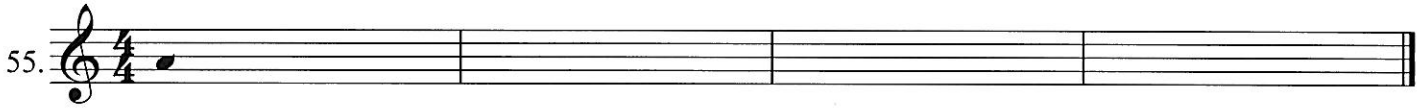
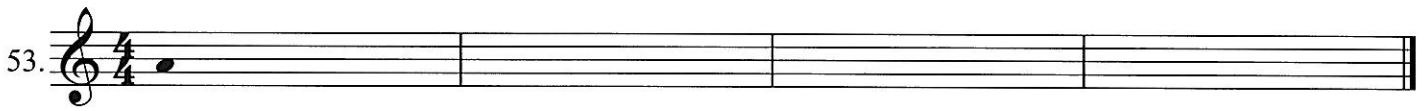


Do majeur

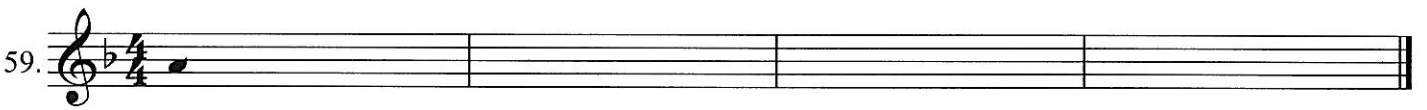
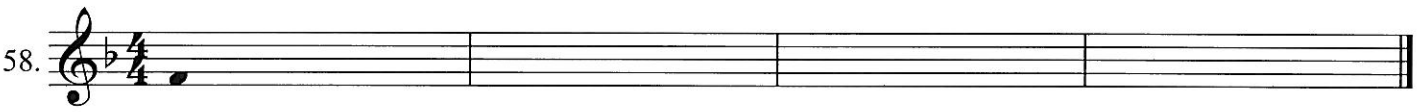


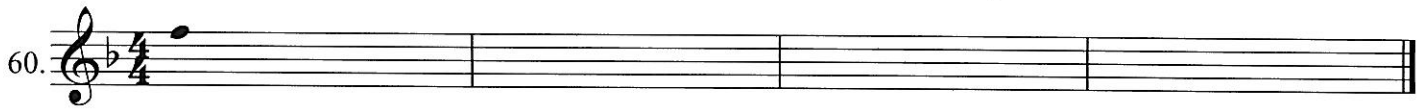


La mineur

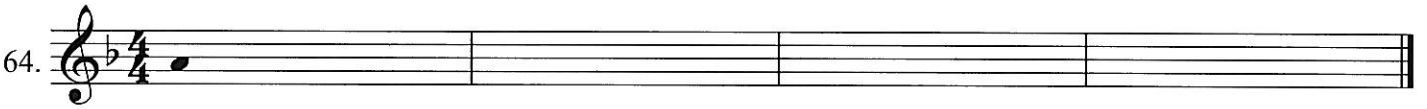
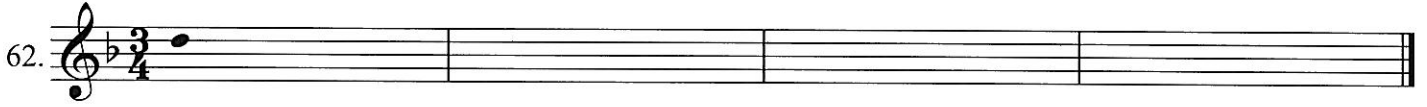
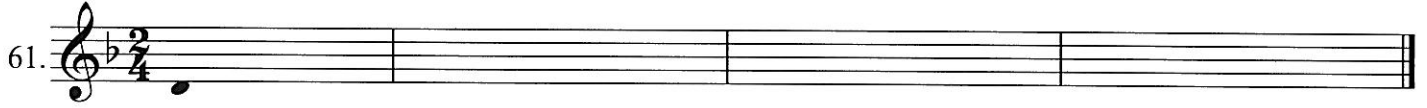


Fa majeur

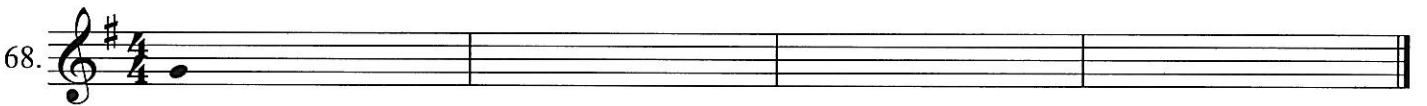
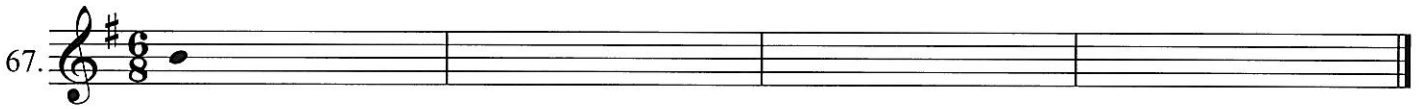
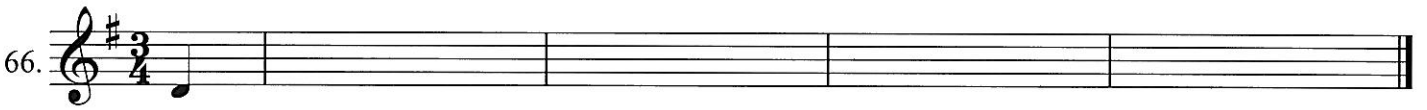




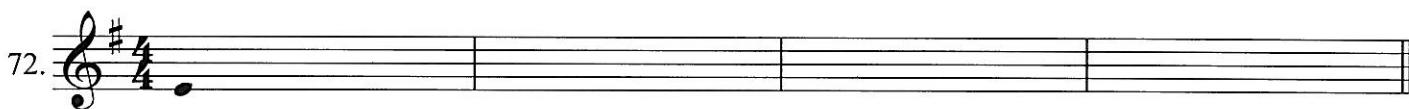
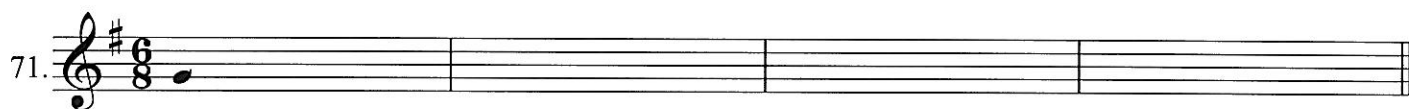
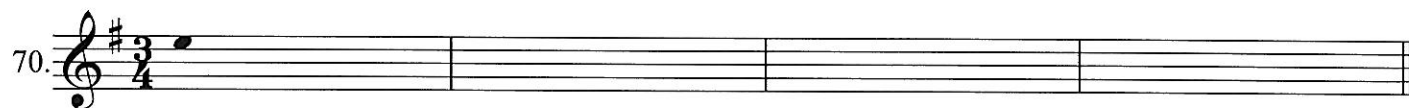
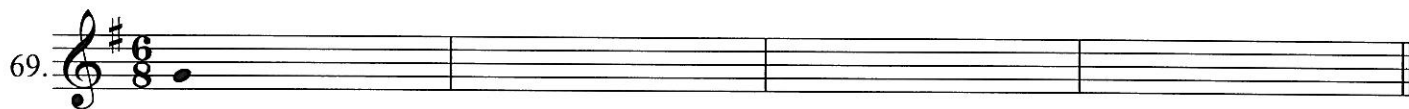
Ré mineur



Sol majeur



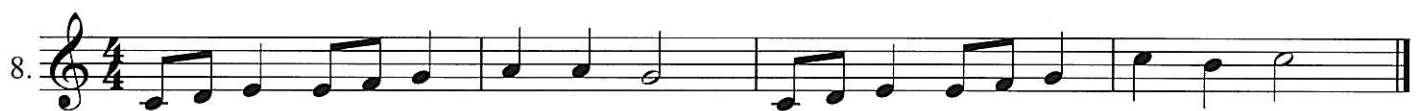
Mi mineur



dictées mélodiques

corrigé

Do majeur



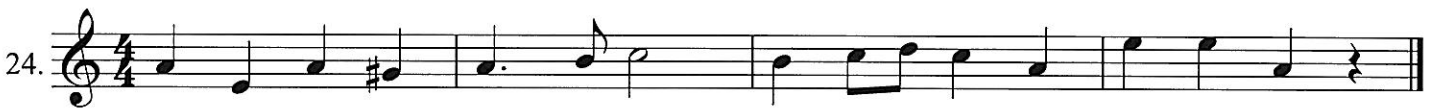
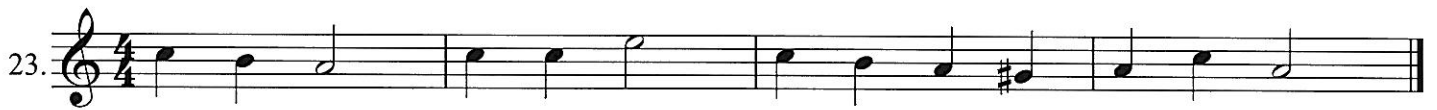
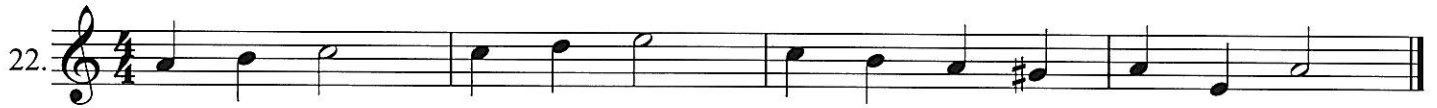
Fa majeur





La mineur



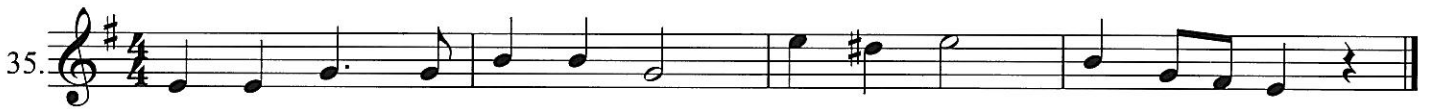


Sol majeur





Mi mineur





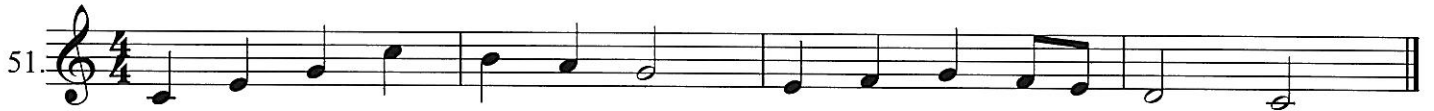
Ré mineur



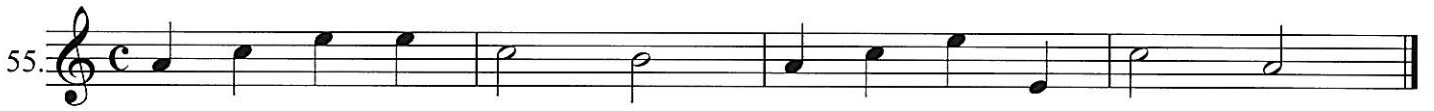
Do majeur



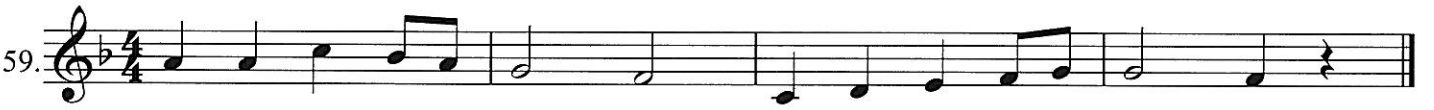
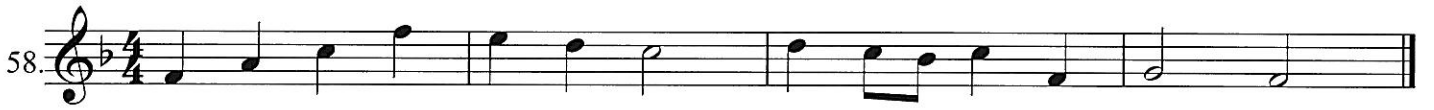
corrigé

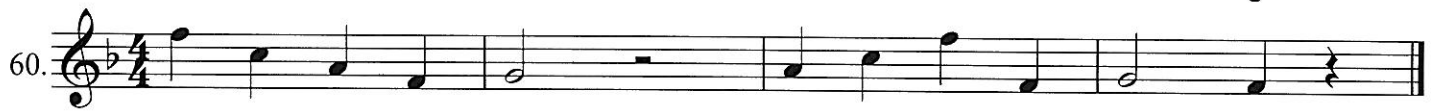


La mineur



Fa majeur

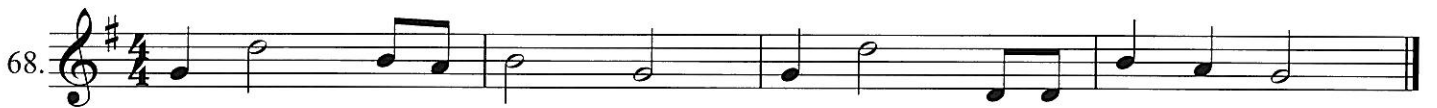




Ré mineur



Sol majeur



Mi mineur

Musical score for Mi mineur, measures 69-72. The score is written in treble clef with a key signature of one sharp (F#). Measure 69 is in 6/8 time and contains a melodic line with eighth and quarter notes. Measure 70 is in 3/4 time and contains a bass line with quarter and eighth notes. Measure 71 is in 6/8 time and contains a melodic line with eighth and quarter notes, including a chromatic descending line. Measure 72 is in 4/4 time and contains a bass line with quarter notes, including two triplet markings over eighth notes.